



S.S.E.R. LTD.

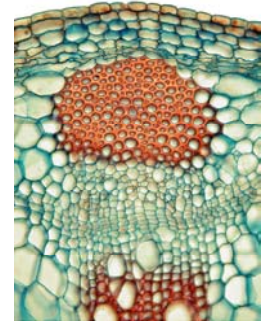
School Software & Educational Resources

HEAD OF BIOLOGY

PUPIL AGE RANGE 16+

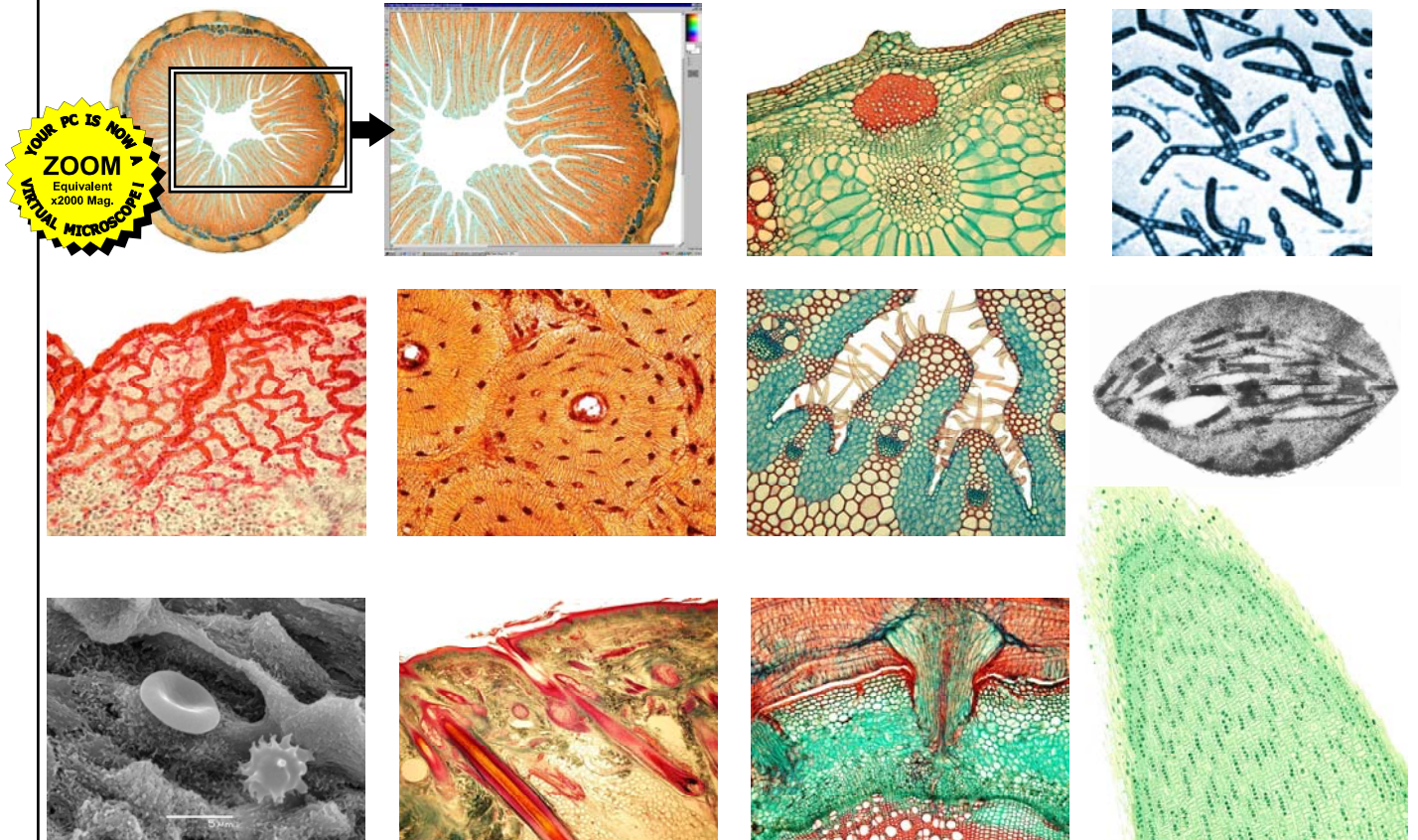
BIOLOGICAL PHOTO-MICROSCOPY

- **SUITABLE TO ENHANCE ANY 16+ BIOLOGY EXAM COURSE!**
- **OVER 650 OUTSTANDING PHOTOS (INC. B/W VERSIONS)!**
- **INTEGRATES WITH OTHER SSER GRAPHICS SETS!**
- **SITE LICENCE & DISCOUNTS AVAILABLE!**
- **INTEGRAL VIEWER NOW INCLUDED!**



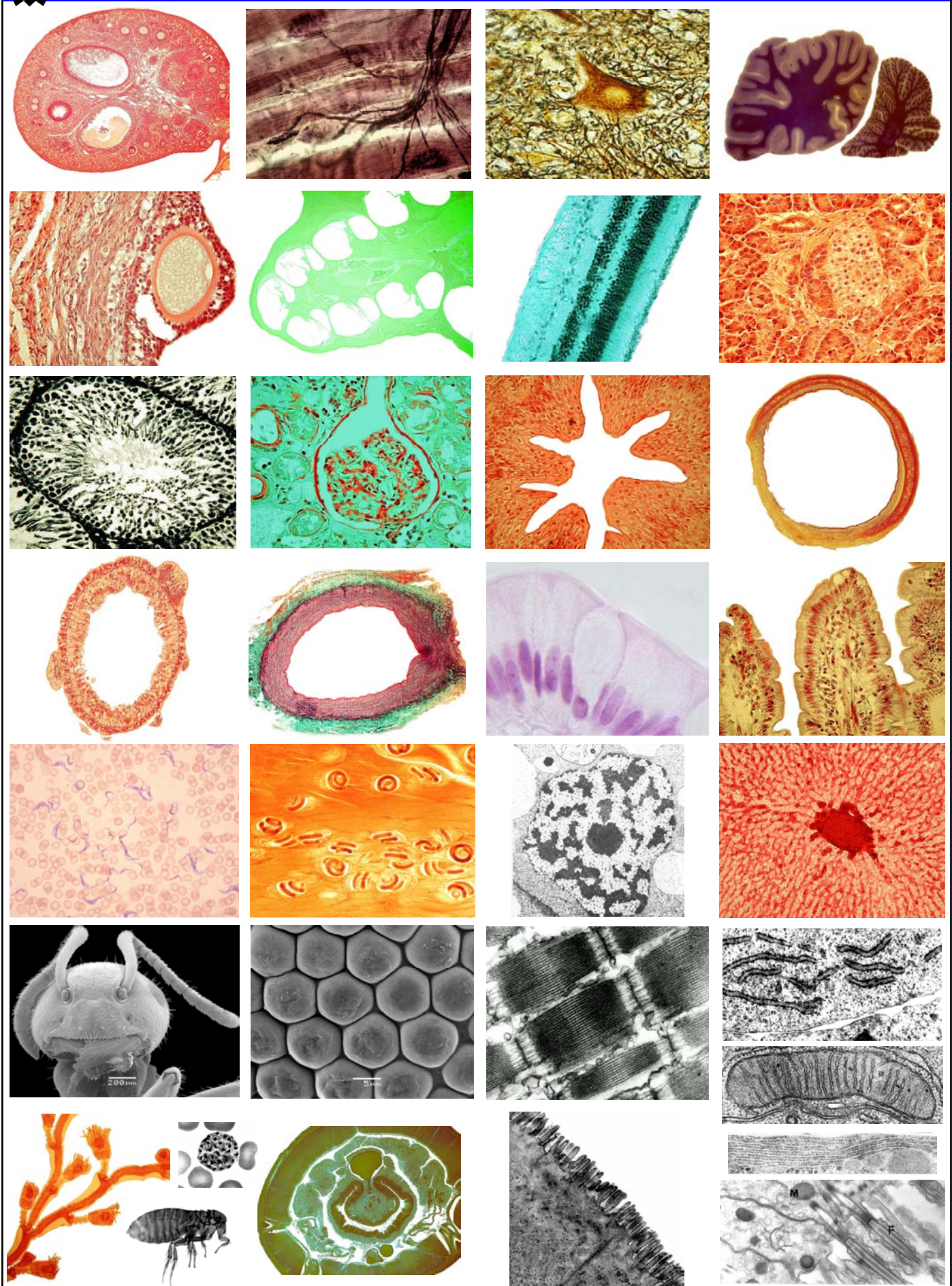
Enhance the quality of your own resources with our high resolution photos for Biology teachers and their pupils. This outstanding collection of photo-micrographs has been assembled using research standard microscopes and the electron-micrographs were produced with the support of Lancaster University. The photo-micrographs are supplied on CD ROM as standard jpeg files and thereby allow your PC to run as a virtual microscope. This unique collection of photos and teachers' notes will enable you to produce a variety of resources such as presentations, worksheets, overhead transparencies, exam papers and even posters up to A2 size - in full colour or grey scale! The photos have been taken using some of the best slides ever produced for 16+ Biology courses. The CD ROM has been mastered to be suitable for all versions of Windows™ and a low cost site licence is also available.

COVERING LIGHT MICROSCOPY, SEM AND TEM IMAGES.





OVER 300 PHOTOS (INC. EQUIVALENT GREY SCALE IMAGES) - SYSTEMATICALLY CATALOGUED AS CIRCULATION, MUSCULO-SKELETAL SYSTEM, NUTRITION, SENSITIVITY, EXCRETION, REPRODUCTION, RESPIRATION, ETC.

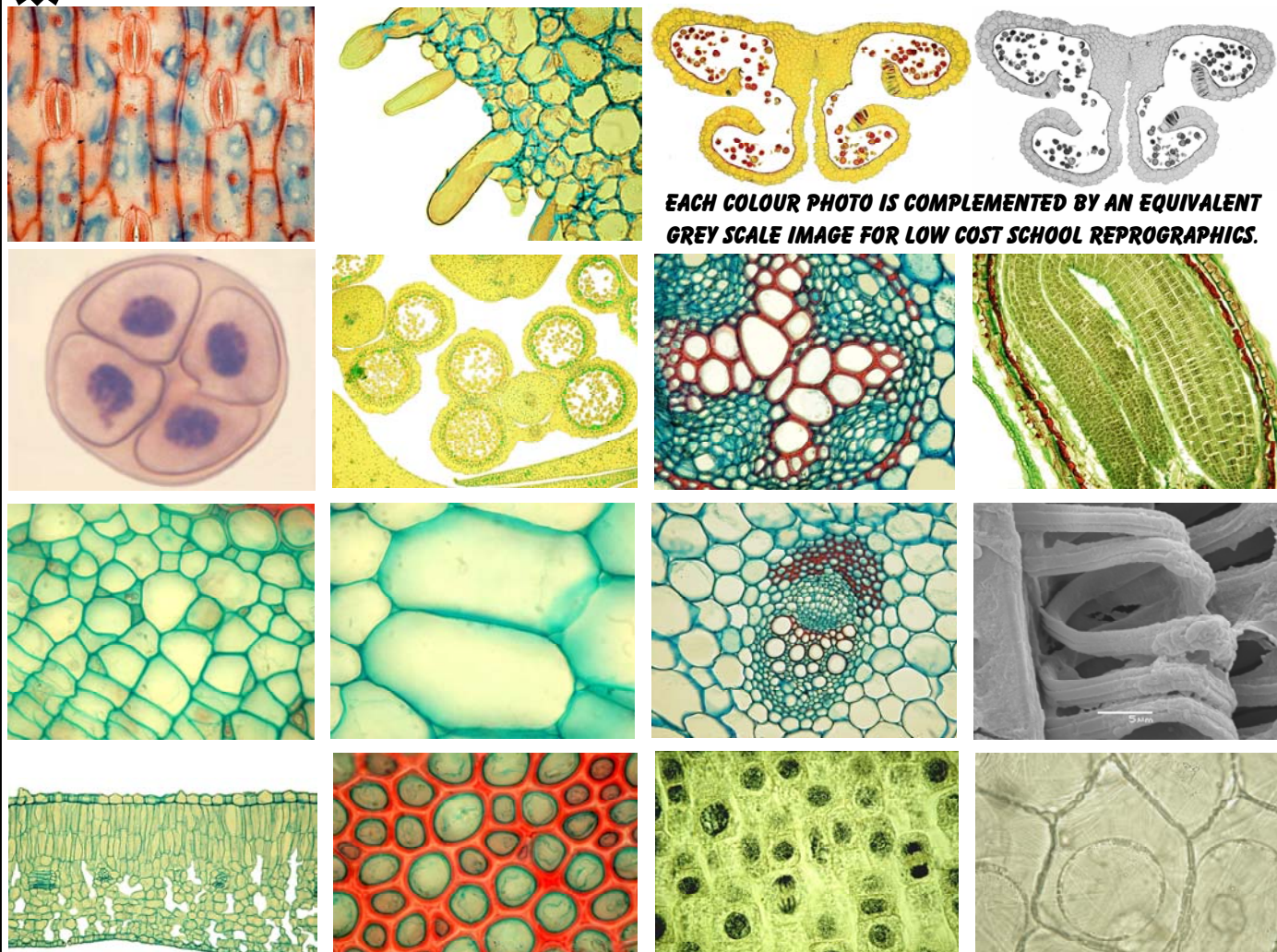


All goods are subject to VAT @ 17.5%

Post & Packaging is free.

Plants & Others

OVER 360 PHOTOS (INC. EQUIVALENT GREY SCALE IMAGES). FEATURES PLANT REPRODUCTION, WATER RELATIONS & GENERAL PLANT HISTOLOGY - XYLEM, SCLERENCHYMA, PARENCHYMA, COLLENCHYMA, PHLOEM & CAMBIUM TISSUES.



EACH COLOUR PHOTO IS COMPLEMENTED BY AN EQUIVALENT GREY SCALE IMAGE FOR LOW COST SCHOOL REPROGRAPHICS.

PHOTO - MICROSCOPY - IMAGE NOTES

CATEGORY - Plants\General Anatomy\Stem

Helianthusstemouterlayersx400.jpg	The outer layers of a section through Helianthus showing epidermis, collenchyma, cortical sclerenchyma tissue.
HelianthusTSvascularbundlex100.jpg	Helianthus stem illustrating a whole vascular bundle surrounding tissue.
HelianthusTSvascularbundlex200.jpg	Helianthus stem section showing a whole vascular bundle at higher magnification. Inter and intrafascicular canals clearly shown.
RanunculusstemTSvascularbundlex200.jpg	Section of Ranunculus stem illustrating a whole vascular bundle.
RanunculusTSstem.jpg	Section of a portion of Ranunculus stem to illustrate the arrangement of vascular bundles in a typical dicotyledonous plant.
HollowTSstemx40.jpg	Section of a hollow stem showing the hollow pith or schizogenous cavity.
TiliaolderwoodTSx100.jpg	Transverse section of a woody stem (Lime) showing secondary xylem and phloem and medullary rays.
TiliaolderwoodTSx100b.jpg	As above with different colour effect.
TiliaolderwoodTSx40.jpg	View of section through a woody Lime stem to illustrate all the tissues from the outer cork layer to the inner pith parenchyma.
TiliaolderwoodTSx40b.jpg	As above with different colour effect.
TShelianthusyoungstemx40.jpg	Photomicrograph of Helianthus stem showing three whole vascular bundles.
TSranunculusstemYYx40.jpg	Section of Ranunculus stem showing tissues from the epidermis to the pith parenchyma.
TSranunculusvascularbundlex200.jpg	Section of a whole vascular bundle of Ranunculus.
TSscotspineyoungstemx100.jpg	Section of a one-year old shoot of Pinus sylvestris showing outer tissues and resin canals.
TSscotspineyoungstemx40.jpg	A low power view of a transverse section through a one-year old shoot of Pinus sylvestris showing resin canals in the cortical region to the left of the photomicrograph.
TSscotspineyoungstemx40b.jpg	Section through the stem of Substantia nigra to illustrate secondary growth.
TSlimeolderstemx40.jpg	Transverse section of an older Lime stem to illustrate annual rings.
TSlimeolderstemx40b.jpg	Transverse section of an older Lime stem illustrating the outer cork layers, the widened medullary rays, secondary phloem and xylem.
TSranunculusxylemvesselsx400.jpg	Xylem vessels from a Ranunculus stem together with the cambium layer.

TEACHER'S NOTES
20 Pages
IDENTIFY & EXPLAIN

THE CD ROM NOW CONTAINS ITS OWN INTEGRAL VIEWER AND IMAGE EXPORT MANAGER TO MANAGE THE PHOTOS. YOU CAN ALSO PURCHASE SERIF PAGEPLUS (FULLY FEATURED DTP PROGRAM), PHOTOPLUS (SUPERB PHOTO/BITMAP IMAGE STUDIO) & DRAWPLUS (VECTOR DRAWING PROGRAM) AT INCREDIBLY LOW PRICES WHEN YOU PURCHASE THIS PRODUCT!



ALLOWS YOU TO LABEL
SERIF PHOTOPLUS
PRINT OR ALTER THE PHOTOS

All goods are subject to VAT @ 17.5%

Post & Packaging is free.



**GRAPHIC VIEWER!
INCLUDED
GRAPHIC VIEWER!**

N.B. Serif software is supplied as OEM versions (complete & unboxed).
SSER/SERIF bundles contain the same versions (or later) of Serif products
as those shown above at only a fraction of the MSRP!

This superb collection of images comes complete with a fully featured Graphic Viewer/Export manager. When any of our Graphic CDs are purchased, the Graphic Viewer automatically integrates all products within one seamless interface - even categories are merged so that themed images from two or more sets appear within the same category. You can view all the images in this outstanding collection by category and/or file type - you can select images by searching using keywords. Selected images can then be copied via the clipboard into MS Word, Publisher, PowerPoint or any other Windows program. SSER are leaders in educational graphics and we provide you with detailed instructions, advice and telephone support. The optional Serif Graphic Products are the perfect companions to any SSER graphic collection - although they are not required to access or use the graphics they offer full DTP and image editing facilities, e.g. adding, removing or altering labels.

For full details and features of the Serif products please phone SSER or visit <http://www.serif.com>

ORDER FORM


DESCRIPTION	STOCK CODE	FORMAT/CONTENTS MS WINDOWS (all versions)	COST: (£) Ex. VAT	COST: (£) Inc. VAT	QTY	SUB TOTAL Inc. VAT
Photo-Microscopy (650+ Images)	BMCD	Photo-Microscopy CD + Single user licence	£40	£ 47.00		
	BMSITE	Full site licence for BMCD - you must also order (or previously have ordered) stock code BMCD	£55	£ 64.63		
SSER/Serif BUNDLES! (Single user licences)	SDP	Serif DrawPlus * You must also order stock item BMCD to obtain this product at this low price!	£35	£41.13		
	SPP	Serif PagePlus You must also order stock item BMCD to obtain this product at this low price!	£40	£47.00		
	SPH	Serif PhotoPlus * You must also order stock item BMCD to obtain this product at this low price!	£35	£41.13		
					Grand Total	£

**EXISTING LICENSE
LOW COST
UPGRADES
AVAILABLE!
CALL FOR DETAILS**

All U.K. customers (except Channel Islands) must pay the VAT inclusive prices. A VAT invoice will be sent with the goods - allowing eligible schools to reclaim VAT. If possible cheques should accompany the orders and are payable to S.S.E.R. Ltd. A receipt/invoice, licence and a set of terms/conditions are sent with the goods which are normally despatched within 24hrs. of receiving your order. Official orders are welcome but please attach a completed S.S.E.R. Ltd. order form indicating the stock code required. **N.B. Owing to the nature of these resources S.S.E.R. Ltd. does not operate an 'inspection copy' service. In the rare case of damaged or faulty goods you must phone S.S.E.R. Ltd to obtain an official returns number.**



Please complete the following table in **BLOCK CAPITALS** N.B. Goods are usually despatched within 24hrs. of receiving your order.

Name:		S.S.E.R. LTD.  P.O. Box 269, Loughborough, England. LE12 7ZL. Phone/Fax: (U.K.) 0871 2205369 (International) +44 (0)871 2205369 E-Mail: SSERLtd@aol.com Web Site: http://www.sserltd.co.uk
Position:	Signature:	
School name:		
School address:		
Pupil Age Range:	Post code:	
School phone :	Fax:	

* Denotes goods eligible for eLCS All goods are subject to VAT @ 17.5% All trademarks acknowledged.